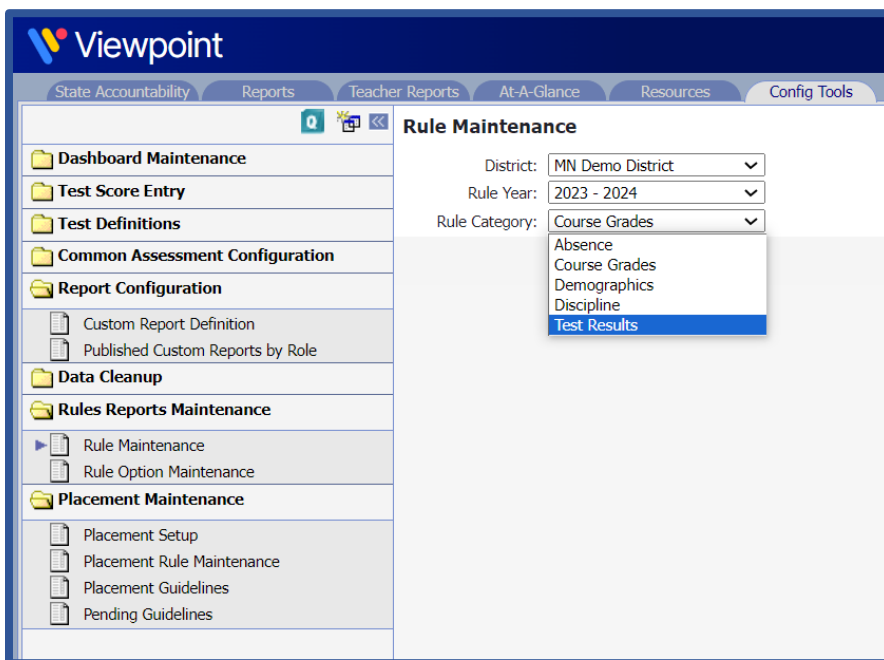




## Release Notes [4.17.2.0]

### Added

- **Custom Rules System** - Added all demographic categories to the dropdown fields for custom use.
  - This does require that a Rule Year is selected. A Rule Year of "(All)" will provide no demographic value options.
  - If there are demographic categories you would like added, please communicate specifics to the Viewpoint Helpdesk.



- **Session Attributes** - Added a configurable session timeout.
- **Naiku Assessments** - Now available for data uploads. Please communicate with the Viewpoint Helpdesk if interested in uploading Naiku data.



## Changed

- **Nebraska** - Updated so that students who graduated before the end of the year are no longer indicated as withdrawn for Nebraska districts.
- **Scores by Percent/Percentile** - Added Score Type dropdown filter to handle assessments with multiple Percentile scores (e.g. CogAT).
- **Scores by Stanine** - Added Score Type dropdown filter to handle assessments with multiple Stanine scores (e.g. CogAT).
- **Scores by Subject and Strand** - Remove unselected scales from producing unpopulated columns.

## Fixed

- **Admin Configuration - System** – Made Message Center and Confidentiality Agreements fields not display and cause crashes on saving, while the old Viewpoint Login page is still being used.
- **SWIS Import** - Fixed minor bug with matching students in SWIS import path from WETL.